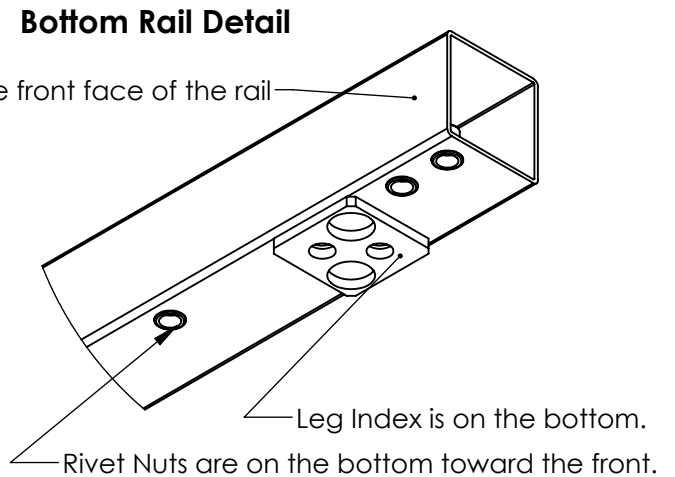
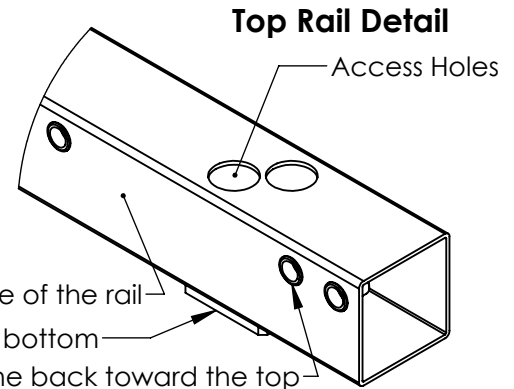
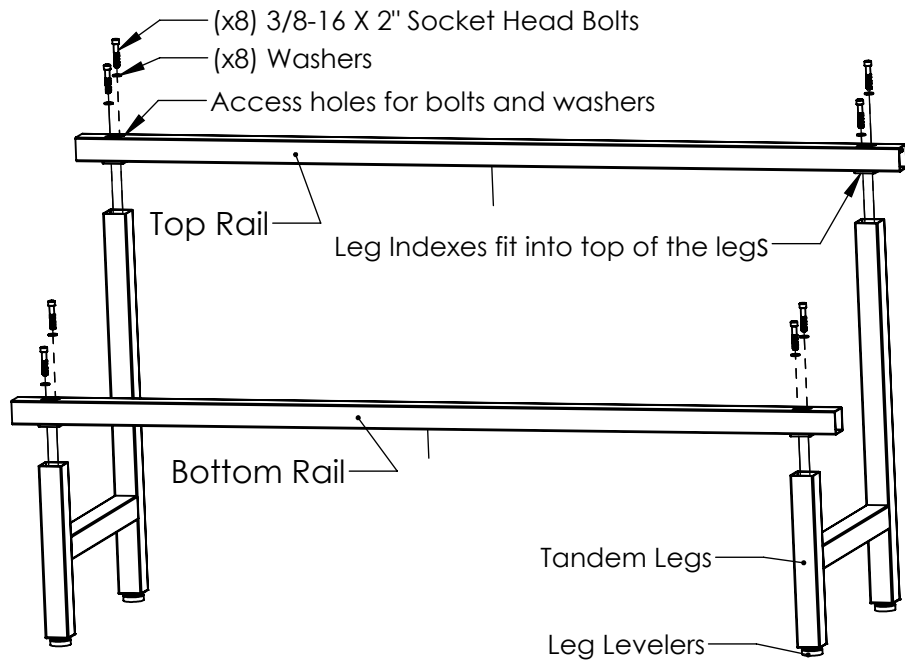


B

B



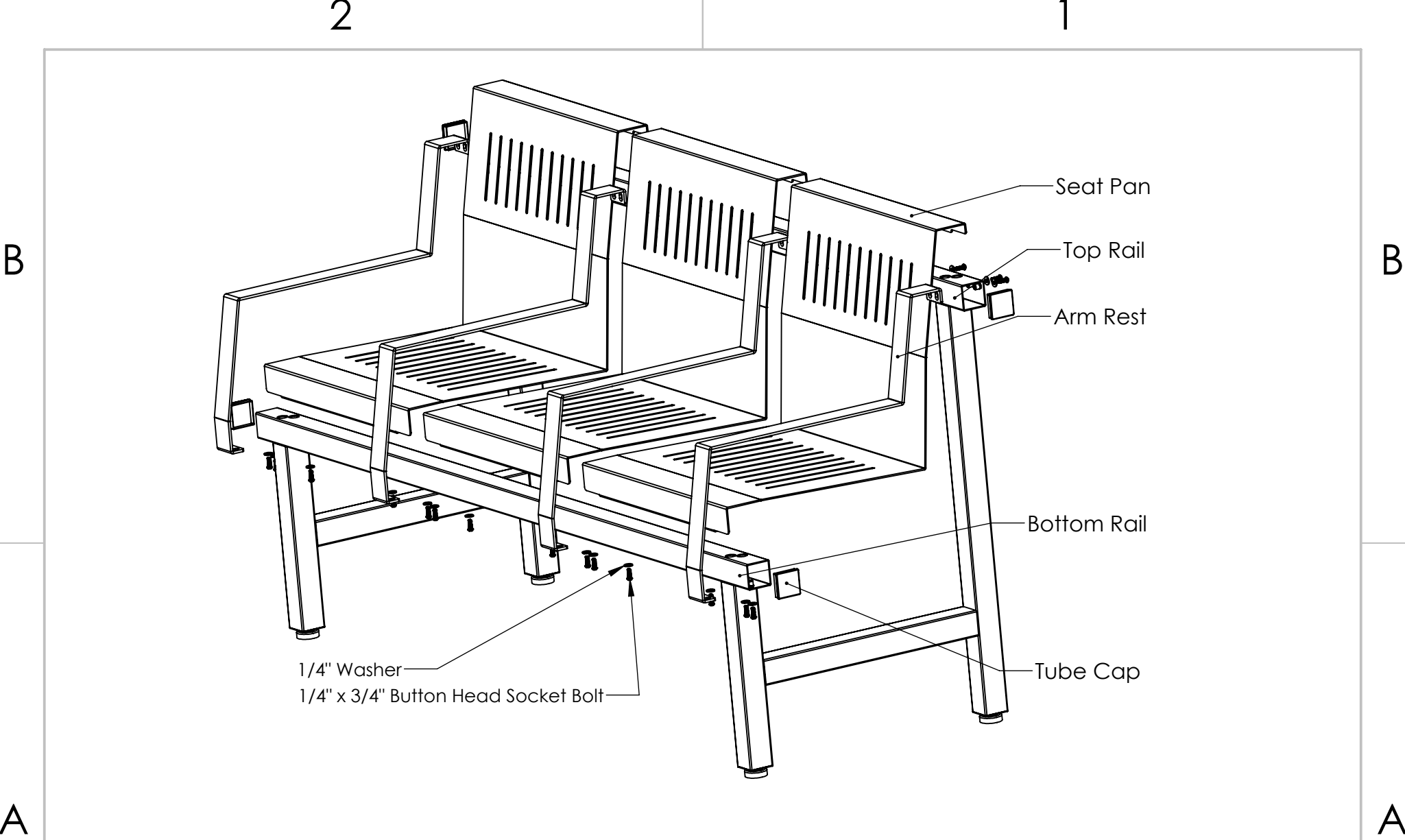
Tandem Seating Frame Assembly Instructions

Insert the top rail into one leg as shown.
 The leg index fits into the leg and the rail should be against the leg.
 Insert the bolt and washer through the access hole and into the leg.
 Tighten the bolt with a 5/16" allen wrench or T-Handle.
 Continue with the remaining (x3) washers and bolts.
 Repeat the procedure for the bottom rail.
 Adjust the levelers so the frame sits flat on the floor.

A

A

HIGH MARK
 Manufacturing, Inc.
 P.O. Box 212 Johnstown, Co. 80534
 970.587.9044 highmarkmanufacturing.com



Tandem Seating Final Assembly Instructions

The seat pans are placed onto the assembled frames.
 Top rail first and then the bottom rail.
 The arm rests are placed onto the frame bottom rail first and then the top rail.
 The tube caps are inserted into the end of the rails.
 A rubber mallet might be needed to get them in place.



HIGH MARK
 Manufacturing, Inc.
 P.O. Box 212 Johnstown, Co. 80534
 970.587.9044 highmarkmanufacturing.com