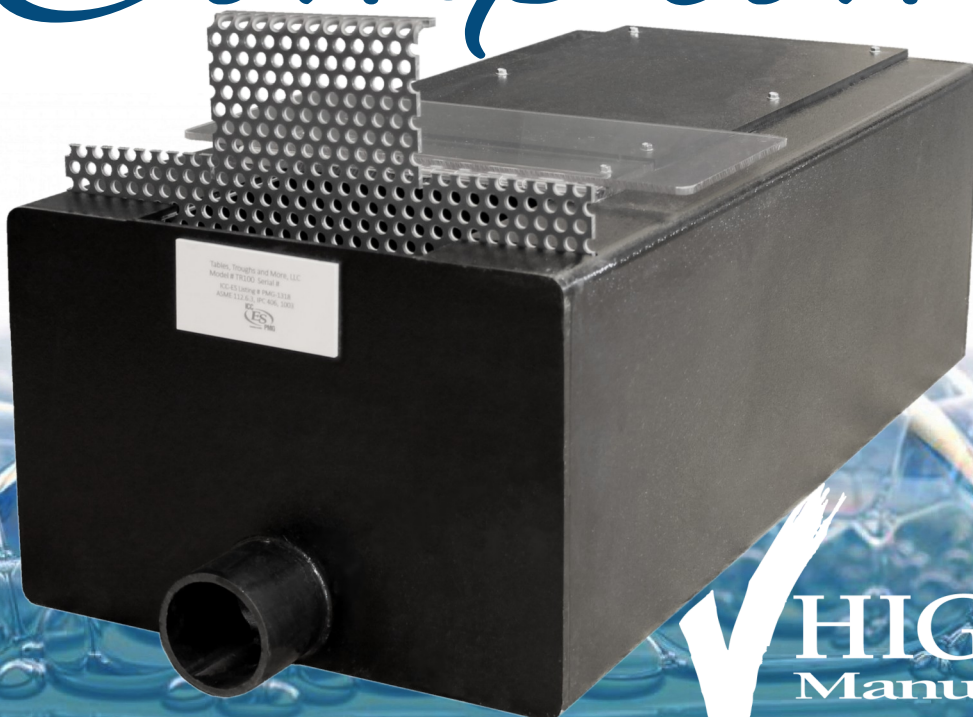


# Drain Troughs



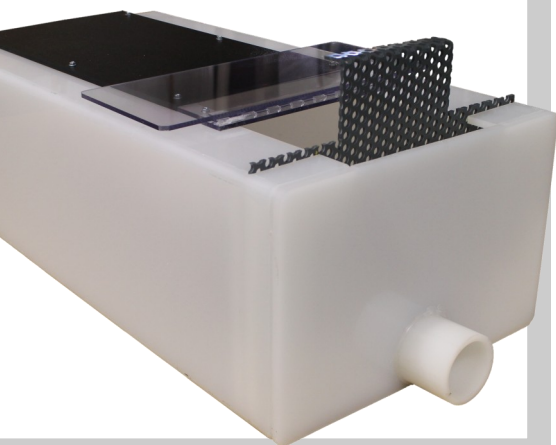
**MODERNIZE**  
*without*  
**Compromise**



**HIGH MARK**  
Manufacturing, Inc.



# Drain Troughs



## A SOLUTION FOR EVERY SPACE

Our troughs do more than just drain waste water. Like all our products, High Mark drain troughs are built from durable materials and designed with a focus on function.

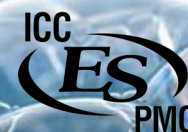
No need for a tangle of pipes filling your bulkhead. High Mark drain troughs offer superior containment while freeing up valuable space. They also support light foot traffic meaning you can utilize the open space in the bulkhead for doing maintenance and repairs.

With integrated lint screens, our troughs also meet the requirement for lint filtration in most jurisdictions throughout the country, eliminating the need for installing an expensive lint interceptor.

Whether draining into the top of our troughs, through a water-tight connection into the side, or with a stand pipe for pump-drain machines, we can size a trough for any space. Install in ground or above, and if they are ordered with High Mark bulkheads they come pre-sloped.

Our troughs carry an ICC-ES listing insuring they are compliant to Section 1703 of the International Building Code, ASME Code 112.6.3 and International Plumbing Codes 406.1 and 1003.6.

- Made of rigid, sturdy, anti-corrosive 3/8" ABS plastic
- Strong enough to support light foot traffic
- Sized to contain a full dump of all equipment draining into them
- Single lint screen comes standard, additional screens can be installed
- Hinged lid over lint screen provides easy access for cleaning
- Lint screens made from 1/4" PVC with 3/8" holes on 3/4" spacing, include overflow cutouts
- Washers can drain into the top or the sides
- Drain outlet can be on the end or the bottom
- Quicker and easier to install and maintain than PVC direct-drain systems and they preserve the space behind the washers
- Approved for lint filtration in most municipalities
- Excellent choice for coin laundries as well as OPL
- Available with sump pump where direct drain is not available
- Polypropylene OPL troughs are also available



4940 County Rd 46 • P.O. Box 212 • Johnstown, CO 80534  
(970) 587-9044; fax: (970) 587-9045 • [info@highmarkmanufacturing.com](mailto:info@highmarkmanufacturing.com)  
visit us at [www.highmarkmanufacturing.com](http://www.highmarkmanufacturing.com)