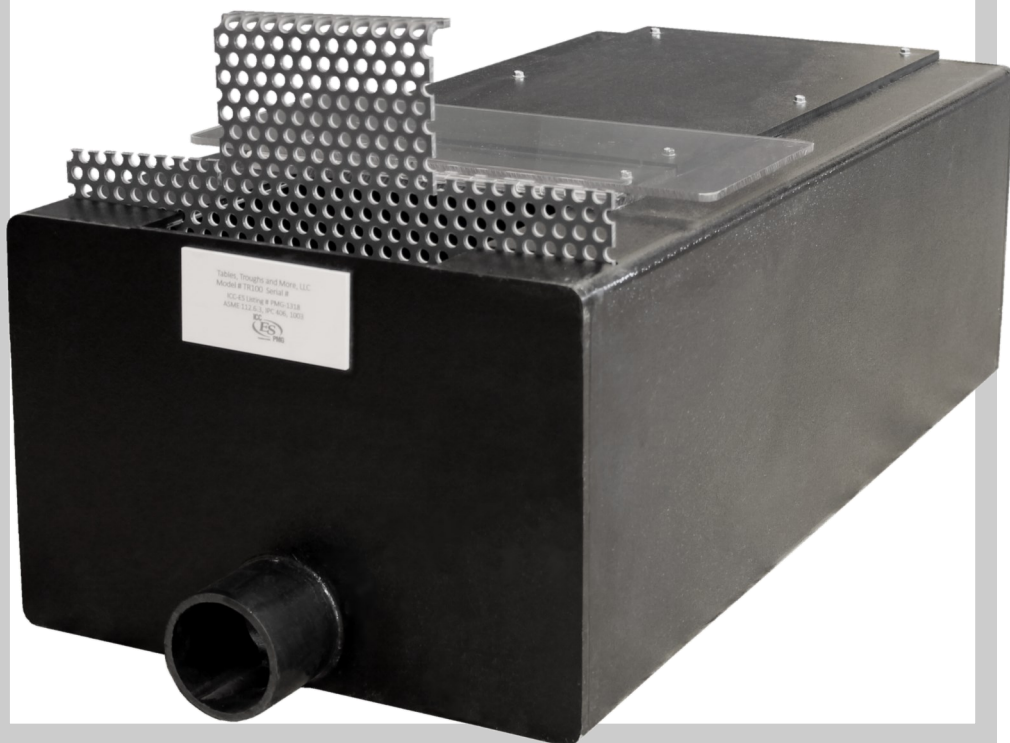
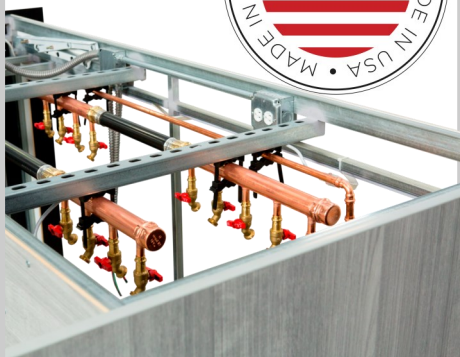


Bulkheads & Drain Troughs

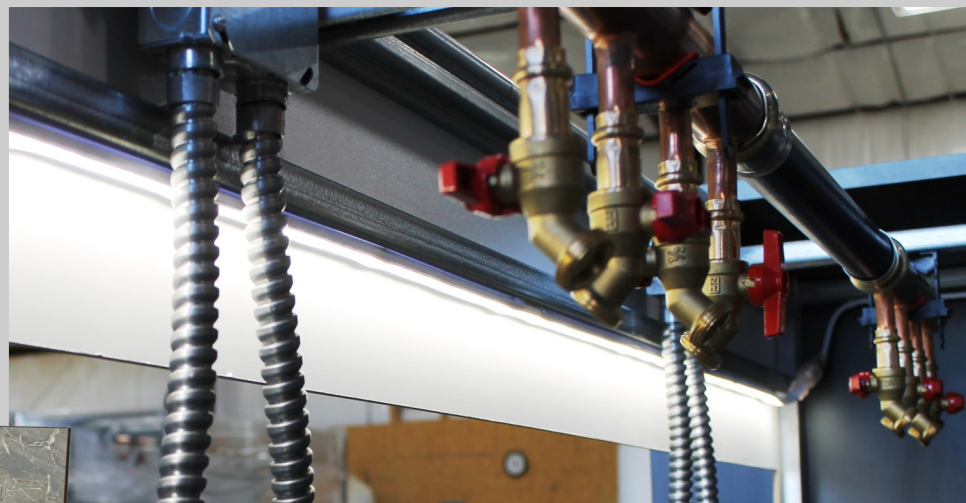


MODERNIZE
without
Compromise



HIGH MARK
Manufacturing, Inc.

Bulkheads



BUILDING BETTER BOXES

If you thought bulkheads were simple boxes made to hide the utilities serving your washers and that their design did little more than hinder

your access to the back of those machines, think again.

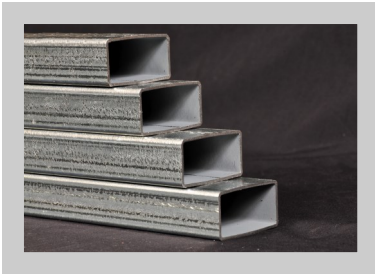
High Mark has brought the bulkhead to new levels. They are designed with function in mind, giving easier access for servicing your equipment and they are delivered ready to install, helping save time and expense.

Standard widths are 16.5", 22.5" and 30", but we also offer a 36" option for those larger projects, or we can work with you on custom widths. Each bulkhead is built to your specifications based on the need of your equipment mix and the desires of the laundry owner. We offer everything from standard quarter-turn valves and galvanized tube steel frames for longevity, to optional access doors and drain troughs, setting our bulkheads apart. And we pride ourselves on finding solutions to your unique installation problems.

We assist you with pricing, design, and laminate selection, but we're also here to help problem-solve those awkward features in your space that have to be worked around. We can include an offset end allowing you to have access to both the electrical panel and the inside of your bulkhead for maintenance on the same end. We can also give your bulkhead a custom profile with height changes to follow the heights of your machines.

Because our bulkheads carry a UL listing, they can be financed and depreciated with the rest of their equipment.





Our standard bulkhead features include:

- Quarter-turn stainless steel ball valves for durability and ease of use
- Galvanized tube steel frame which inhibits rust while requiring fewer supports allowing us to provide you better access to the backs of the machines for service
- PEX water lines and copper manifolds
- White melamine top and end panels, double laminated against moisture

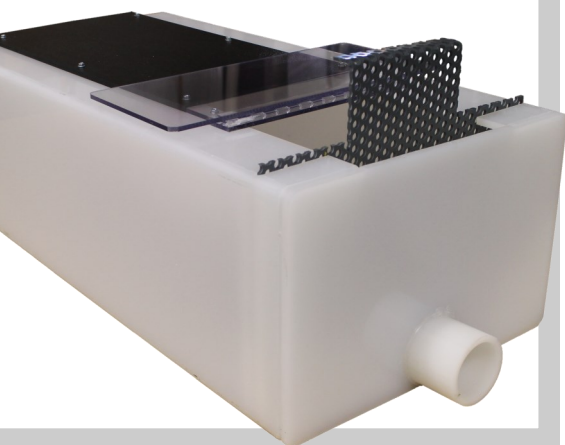
Options include:

- Hinged and locking doors integrated into the end panels
- All copper water lines
- Return lines for hot water recirculation
- High-pressure laminate covers in a multitude of colors and patterns, or optional melamine colors and patterns
- Switched LED lighting
- Offset ends to solve the issue of access and electrical together
- GFCI outlets inside for service or electronic components, or mounted through the end panel for customer use
- Curved “radius” end panels for a distinctive look
- Custom widths
- Creative solutions to obstacles on your jobsites



4940 County Rd 46 • P.O. Box 212 • Johnstown, CO 80534
 (970) 587-9044; fax: (970) 587-9045 • info@highmarkmanufacturing.com
 visit us at www.highmarkmanufacturing.com

Drain Troughs



A SOLUTION FOR EVERY SPACE

Our troughs do more than just drain waste water. Like all our products, High Mark drain troughs are built from durable materials and designed with a focus on function.

No need for a tangle of pipes filling your bulkhead. High Mark drain troughs offer superior containment while freeing up valuable space. They also support light foot traffic meaning you can utilize the open space in the bulkhead for doing maintenance and repairs.

With integrated lint screens, our troughs also meet the requirement for lint filtration in most jurisdictions throughout the country, eliminating the need for installing an expensive lint interceptor.

Whether draining into the top of our troughs, through a water-tight connection into the side, or with a stand pipe for pump-drain machines, we can size a trough for any space. Install in ground or above, and if they are ordered with High Mark bulkheads they come pre-sloped.

Our troughs carry an ICC-ES listing insuring they are compliant to Section 1703 of the International Building Code, ASME Code 112.6.3 and International Plumbing Codes 406.1 and 1003.6.

- Made of rigid, sturdy, anti-corrosive 3/8" ABS plastic
- Strong enough to support light foot traffic
- Sized to contain a full dump of all equipment draining into them
- Single lint screen comes standard, additional screens can be installed
- Hinged lid over lint screen provides easy access for cleaning
- Lint screens made from 1/4" PVC with 3/8" holes on 3/4" spacing, include overflow cutouts
- Washers can drain into the top or the sides
- Drain outlet can be on the end or the bottom
- Quicker and easier to install and maintain than PVC direct-drain systems and they preserve the space behind the washers
- Accepted for lint filtration in most municipalities
- Excellent choice for coin laundries as well as OPL
- Available with sump pump where direct drain is not available
- Optional legs can be installed
- Polypropylene OPL troughs are also available



HIGH MARK
Manufacturing, Inc.

4940 County Rd 46 • P.O. Box 212 • Johnstown, CO 80534
(970) 587-9044; fax: (970) 587-9045 • info@highmarkmanufacturing.com
visit us at www.highmarkmanufacturing.com