

FRONT LOAD WASHERS

Re: Construction Specifications for Custom-Built Commercial Appliance Outlet Centers (Bulkheads)

- Frame Construction:** Rectangular galvanized steel tube construction is used. This provides the rigidity and strength without adding to the weight. The frame is designed to be rigid and strong without any obstructions in the way of your equipment hookups or service access.
- Frame Width:** All of our cabinets are custom-built to suit your individual needs. For pricing purposes we have created our price books with three standard sizes of 14-1/2", 22-1/2", and 30". For all other sizes please contact the factory..
- Frame Height:** The finished height will be determined by the customer. We recommend not to exceed one inch higher than the tallest washer. For pricing purposes our price book is figured this way. (Average height is 46".)
- Frame Length:** The frame length will be determined by the customer. The industry standard is 1/2" to 3/4" between washers, or as desired. (Our layout is 1/2" gap between washers.)
- Cabinet Sections:** Any one unit over 20' long will be split into two sections. Each section will come with the necessary hardware to connect the cabinets back together on the project site.
- Water Lines:** All water lines are type "L" hard copper or Aquapex tubing and pressure tested to 120 psi. 1/2" hot and cold ball valves are furnished for each washer. Water lines are sized for a maximum velocity of 8 ft./sec.
- Water Drainage:** The water drain in the cabinets is a PVC drain. It is ASTM 2665 DWV and is assembled according to ASTM D 2855 standards. One of our standard drainage models will usually comply with a particular plumbing code. For alternate configurations please contact the factory. (Troughs are available)
- Electrical:** All 15 and 20 amp services are wired with a #10 and #12 THHN solid copper wire. All wire is run in EMT conduit. A separate circuit breaker and receptacle is furnished for each appliance. All electrical service complies with the National Electric Code. (3P will have a four foot whip.)
- Service Connections:** All of the cabinet service connections are located at the same end unless otherwise specified. A plumbing rough-in diagram is on page 4.
- Tops & End Caps:** Top covers are made of 3/4" Medex, water resistant panel covered with prefinished marlite paneling on both sides and trimmed with a PVC edging. All of the end panels are 8" wider than the cabinet. This allows the end cap to conceal the space between the cabinet and the appliance. For a surcharge we have a variety of decorative plastic laminates available, should you desire a decorative pattern.

OPTIONAL EQUIPMENT FOR FRONT LOAD WASHERS

Back to Back Models and Single Line Models

Electrical: **Note: All 3-phase panels are wired for 3-phase 120/208 volt wye unless otherwise specified.**

1. Extra 120 volt 15 or 20 1 P electrical outlet
2. Extra 120 volt 15 amp 1 P duplex receptacle - mounted through the end panel with a water tight cover

Surcharge for machines to be wired as below, in lieu of 120 volt 15 or 20 amp single phase receptacles.

3. 120 volt 1 P 20 amp pigtail per washer
4. 240 volt 1 P 15 or 20 amp pigtail per washer
5. 240 volt 1 P 25 or 30 amp pigtail per washer
6. 208 or 240 volt 3 P 15 or 20 amp pigtail per washer
7. 208 or 240 volt 3 P 25 or 30 amp pigtail per washer
8. 3 P panel in lieu of 1 P panel
9. Panel Locks

Water Supply:

10. Extra hose bibs
11. 3/4" hot water return line:
Back to Back Models
Single Line Models

Frames Tops and End Panels:

Frame width: 14-1/2" 22-1/2" 30"

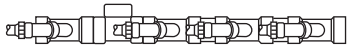
12. Variation in height/width of a bulkhead, per variation
13. Extra length of bulkhead, per linear foot
14. Extra marlite top covers, per linear foot
15. Extra marlite end panels, each
16. Laminated tops in lieu of marlite, per linear foot⁵
17. Laminated end panels in lieu of marlite, each
18. Extra marlite paneling, attached, per square foot

GRAVITY DRAIN - STANDARD MODELS AVAILABLE

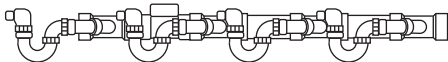
These Gravity Drain Models are designed with 2" drain connections. The 2" drains with 2" traps will discharge at a rate of 33 gallons per minute with a head of 18", and untrapped models will discharge at a rate of 43 gallons per minute.

These models contain no drain

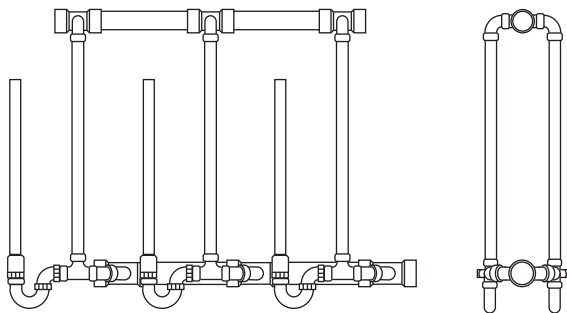
- BBND** – Back to Back Model, contains no drains
- SLND** – Single Line Model, contains no drains



-
- BBGD** – Back to Back Model
 - SLGD** – Single Line Model 4" PVC drain with a 4" x 2" wye branch and 2" nipple for each washer. Cleanout at high end.
Note: This model is not intended for direct connection to the sewer



-
- BBGDYP** – Back to Back Model
 - SLGDYP** – Single Line Model 4" PVC drain with a 4" x 2" wye and a 2" P trap and nipple for each washer. Cleanout at high end.
Note: This model is not intended for direct connection to the sewer

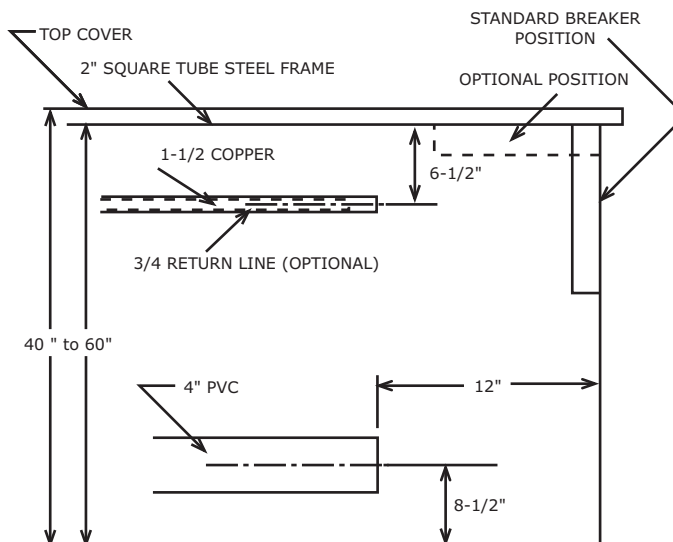


-
- BBGDYY** – Back to Back Model
 - SLGDYY** – Single Line Model 4" PVC drain with a 4" x 2" wye and a 2" P trap and nipple for each washer. Vented between each trap and a main to horizontal circuit vent and main vent stack.

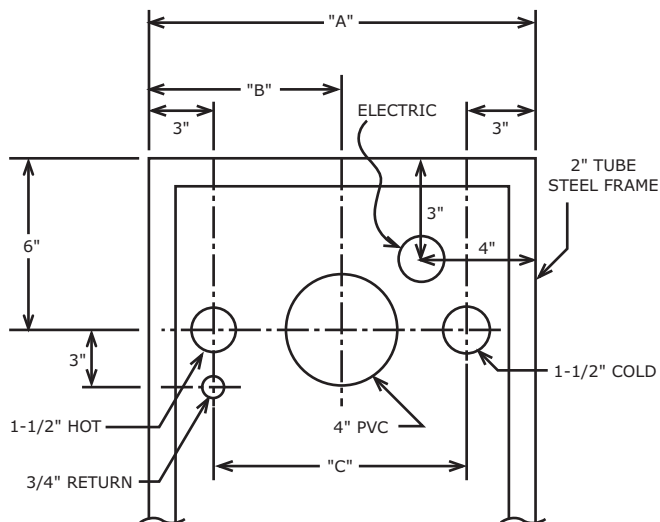
ROUGH-IN PLUMBING DIAGRAM FOR GRAVITY DRAIN MODELS

In single line models it is recommended that the 4" main drain be offset towards the back wall of the unit.

Not shown in stub-up.



*This dimension can be reduced only if drain connections are made below floor level.



FLOOR PLAN - STUB UP

MODELS:

BBND, SLND,
BBGD, SLGD,
BBGDYP, SLGDYP,
BBGDYY, SLGDYY

FRAME WIDTH "A"	14-1/2"	22-1/2"	30"
DRAIN CENTER "B"	7-1/4"	11-1/4"	15"
WATER LINE CENTER "C"	8-1/2"	16-1/2"	24"